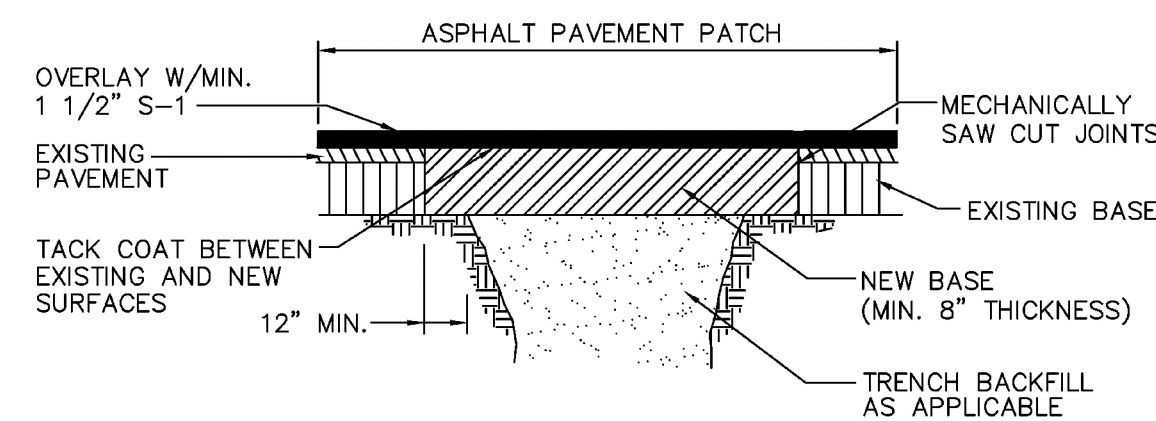
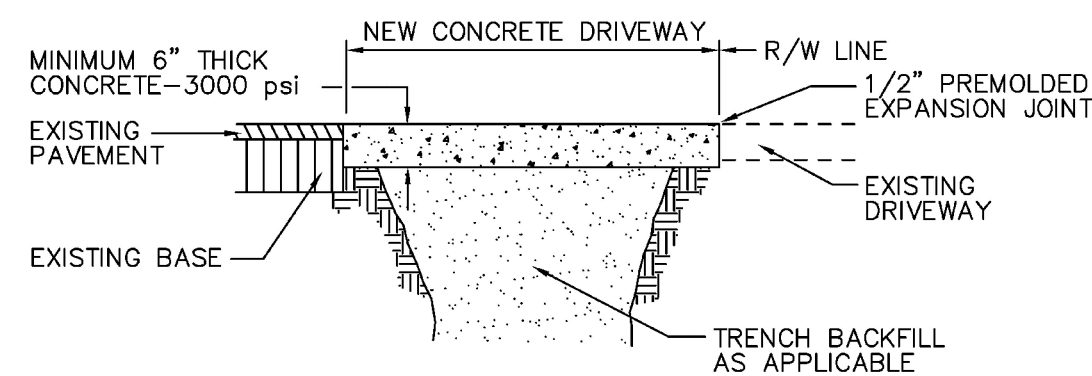
PERPENDICULAR ROAD  
CROSSINGS (TYPE III)

### STANDARD PARALLEL ROAD RESTORATION (TYPE IV)

## SURFACE RESTORATION

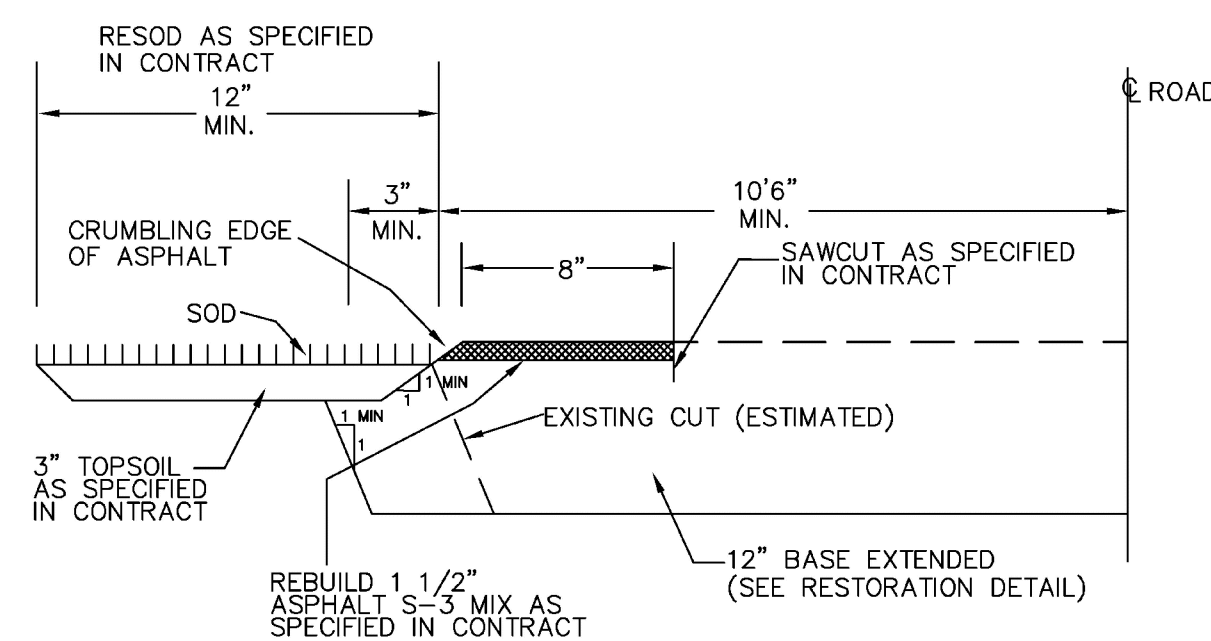
ENGINEERING STANDARDS 2025			
REVISIONS		ENGINEERING DIVISION CITY OF POMPANO BEACH	SURFACE RESTORATION
BY	DATE		
		SCALE: N.T.S.	DATE: MAY 2022 DWG. NO. <b>306-2</b>



CONCRETE DRIVEWAY  
RESTORATION (TYPE V)

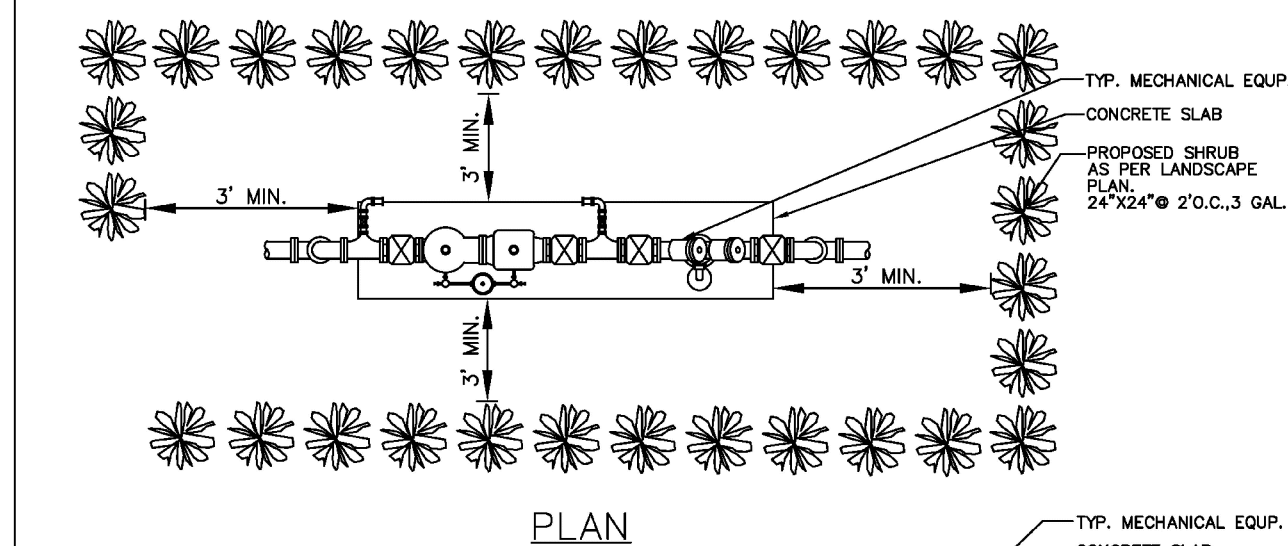
## SURFACE RESTORATION

ENGINEERING STANDARDS 2025				
REVISIONS		ENGINEERING DIVISION CITY OF POMPANO BEACH	SURFACE RESTORATION	
BY	DATE			
				DATE: MAY 2022 DWG. NO. 306-3
SCALE: N.T.S.				

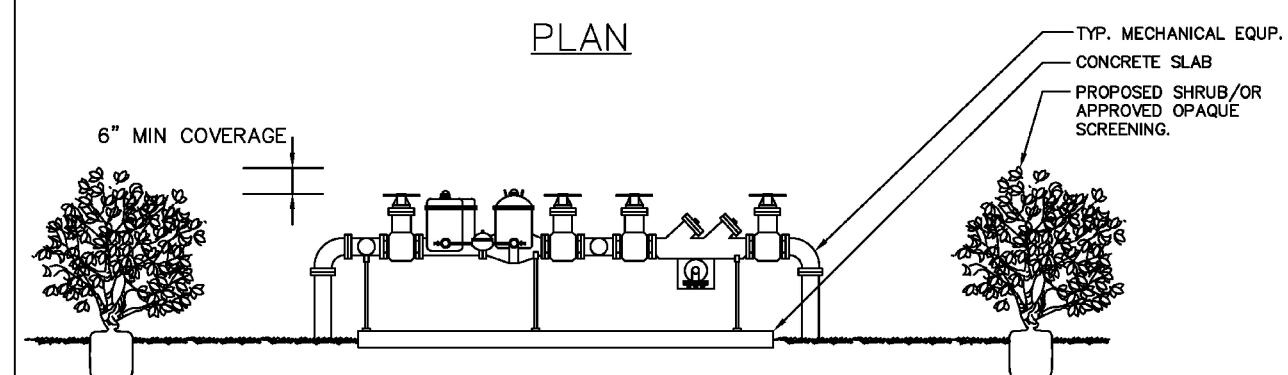


## EDGE OF PAVEMENT RESTORATION

ENGINEERING STANDARDS 2025				
REVISIONS		ENGINEERING DIVISION CITY OF POMPANO BEACH	EDGE OF PAVEMENT RESTORATION	
BY	DATE			
SCALE: N.T.S.			DATE: MAY 2022 DWG. NO. 306-4	



## PLAN

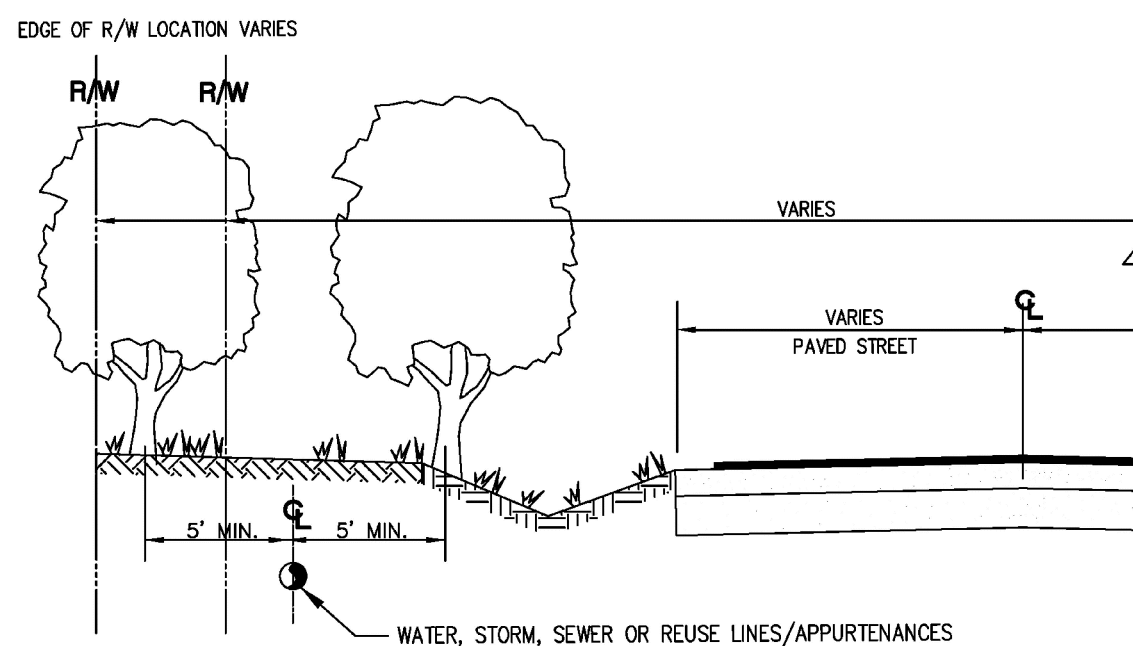
ELEVATION

### TYPICAL SCREEN FOR UTILITIES

NOTES

PLEASE NOTE THAT AS PER CITY ORDINANCE(S) 50.02(A) (4) AND 100.35(E), STREET TREES SHALL NOT BE PLACED ON TOP OF OR 5' OF EITHER SIDE OF ANY CITY OWNED UTILITY INFRASTRUCTURE. ALSO, PLEASE NOTE THAT NO TREES SHRUBBERY OR OBSTRUCTION SHALL BE PLACED WITHIN A 3' RADIUS OF A CITY OWNED LATERAL CLEANOUT OR WATER & OR REUSE METER.

ENGINEERING STANDARDS 2025			
REVISIONS		ENGINEERING DIVISION CITY OF POMPANO BEACH	TYPICAL SCREEN FOR UTILITIES
BY	DATE		
TCW	APRIL 2010		
SCALE: N.T.S.		APPROVED BY:	DATE: MAY 2022 DWG. NO. 315-1

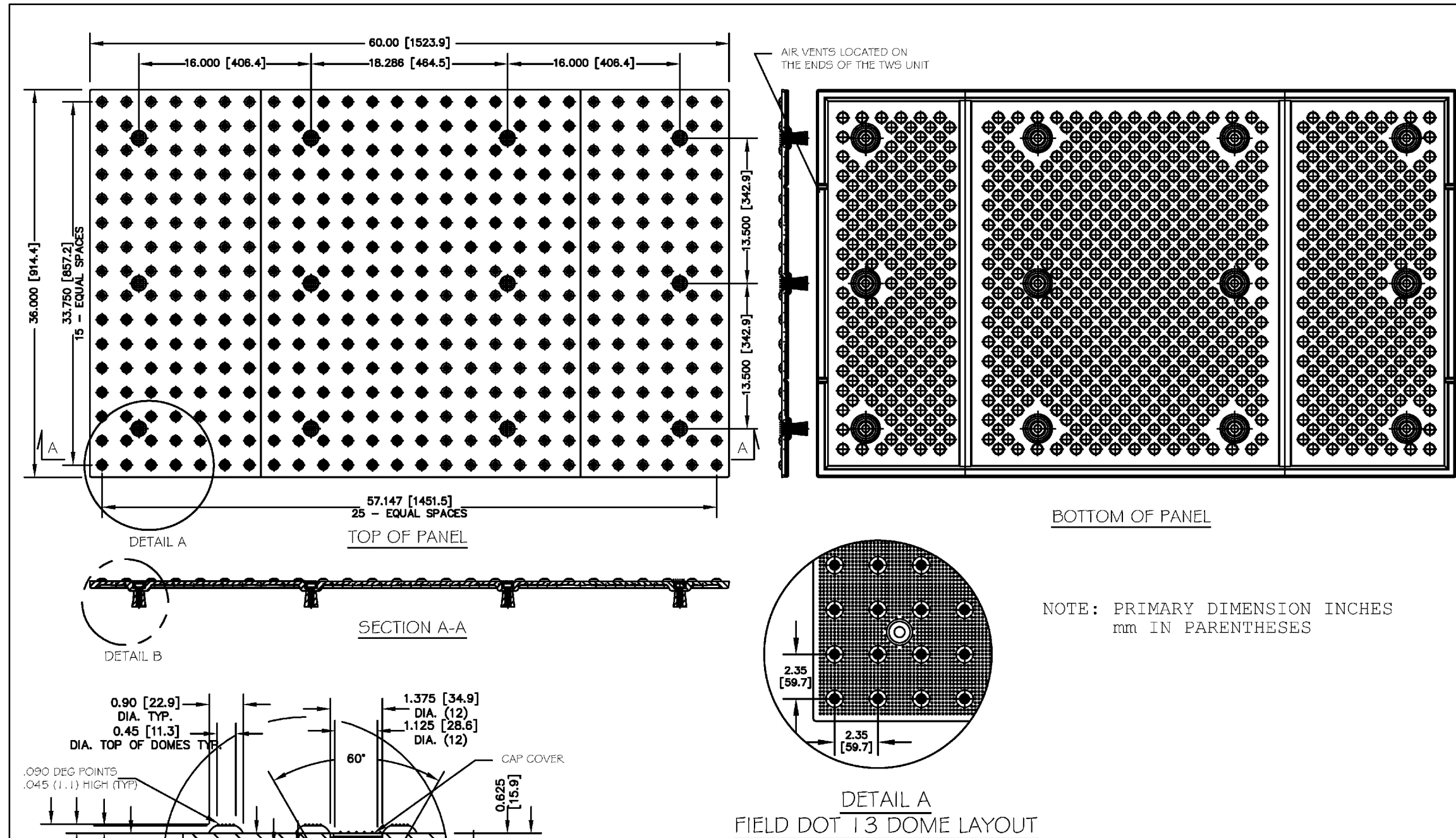


## TREE LOCATIONS REQUIRED IN PUBLIC R/W ON UTILITY EASEMENTS

## NOTES

PLEASE NOTE THAT AS PER CITY ORDINANCE(S) 50.02(A) (4) AND 100.35(E), STREET TREES SHALL NOT BE PLACED ON TOP OF OR 5' OF EITHER SIDE OF ANY CITY OWNED UTILITY INFRASTRUCTURE. ALSO, PLEASE NOTE THAT NO TREES SHRUBBERY OR OBSTRUCTION SHALL BE PLACED WITHIN A 3' RADIUS OF A CITY OWNED LATERAL CLEANOUT OR WATER & OR REUSE METER.

ENGINEERING STANDARDS 2025			
REVISIONS		ENGINEERING DIVISION CITY OF POMPANO BEACH	REQUIRED TREE LOCATIONS
BY	DATE		
SCALE: N.T.S.		APPROVED BY:	DATE: MAY 2022 DWG. NO. 316-1



## ENGINEERING STANDARDS 2025

REVISIONS		ENGINEERING DIVISION CITY OF POMPANO BEACH	ADA Detectable Warning Mats	
BY	DATE		APPROVED BY:	DATE: MAY 2022
				DWG. NO.
SCALE: N.T.S.				318-1

[illegible]

DESIGN	DESIGN
DELIVERABLE:	DEVELOPMENT
ISSUE DATE:	11/12/2025

PROJECT NUMBER: 2024-0559.0000  
KEITH: 10647.01  
DRAWN BY: CM  
CHECKED BY: ME

Copyright (c) by SYNALOVSKI ROMANIK SAYE, LLC  
All Rights Reserved.

---

SHEET TITLE:

## PAVING, GRADING, AND DRAINAGE DETAILS

SHEET NUMBER:

**CP-503**